

## 21st DSC 2022 Europe Conference

Virtual validation use of in case ADAS function  
development of using specific tools as dynamic  
Driver in the loop simulator

15th September

**Márk LELKES PhD**

Site leader



## BAY ZalaZone DIL Laboratory Located in Zalaegerszeg

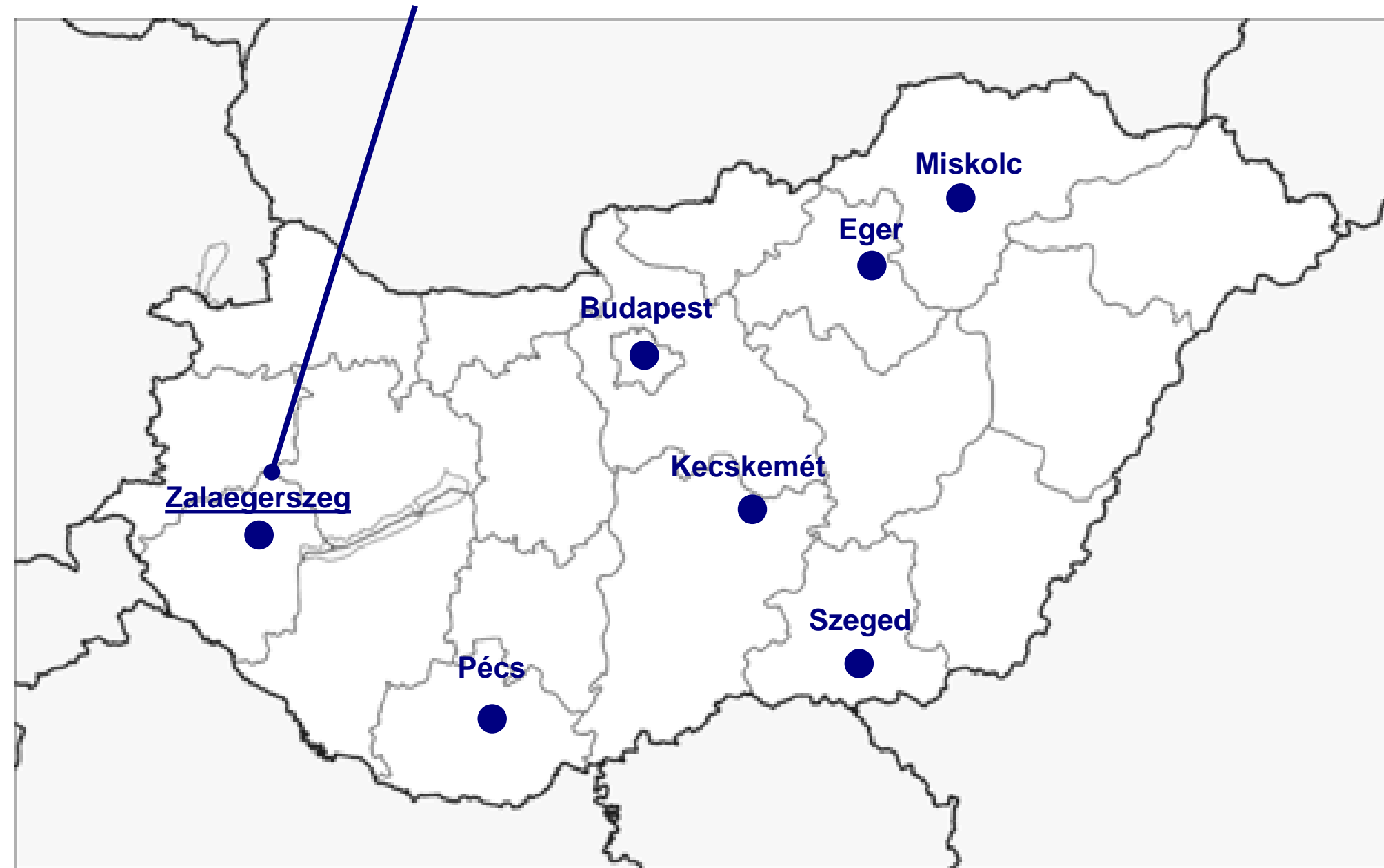
Founded in 1993

250 employees, 160 researchers

Applied research focus

BAY Divisions:

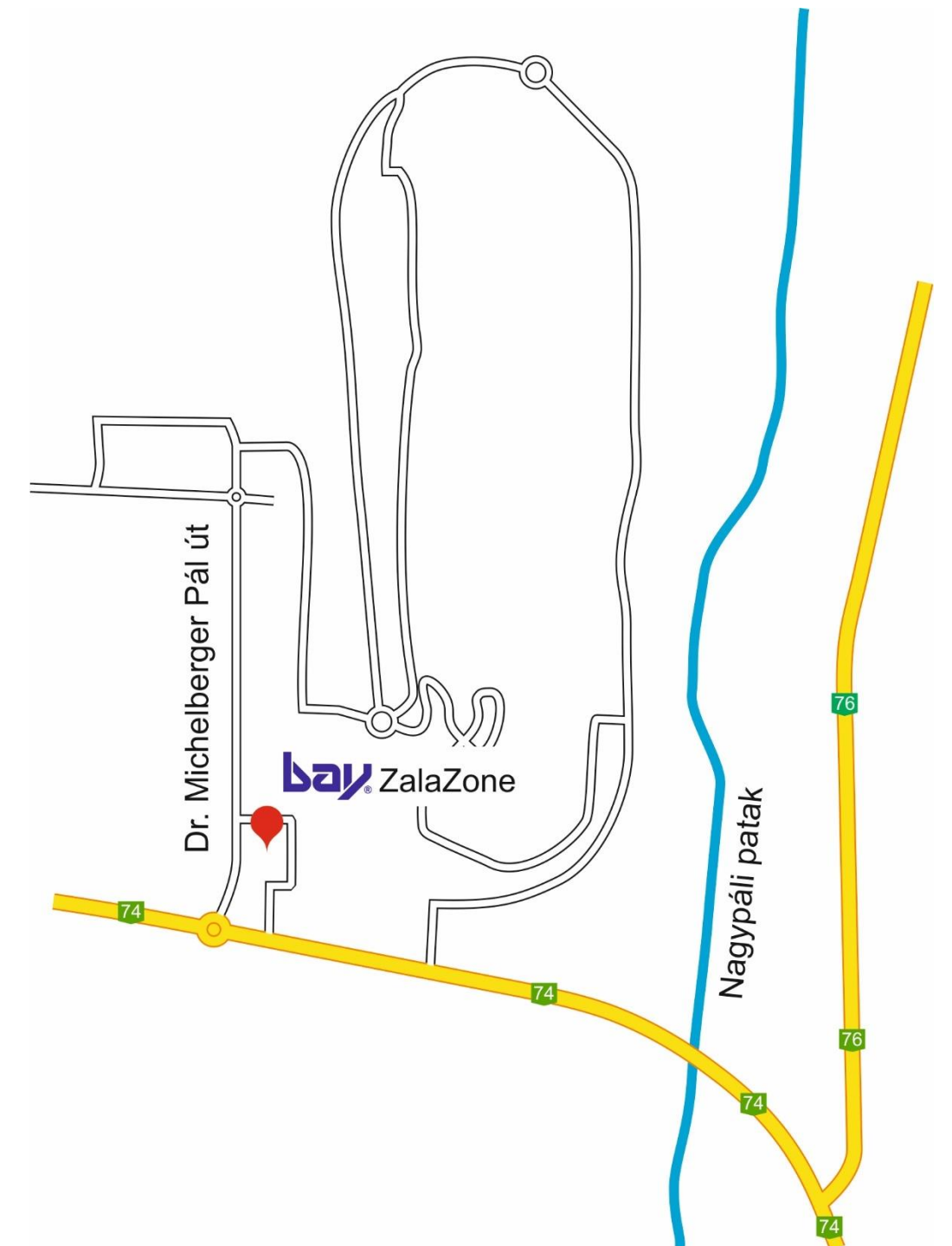
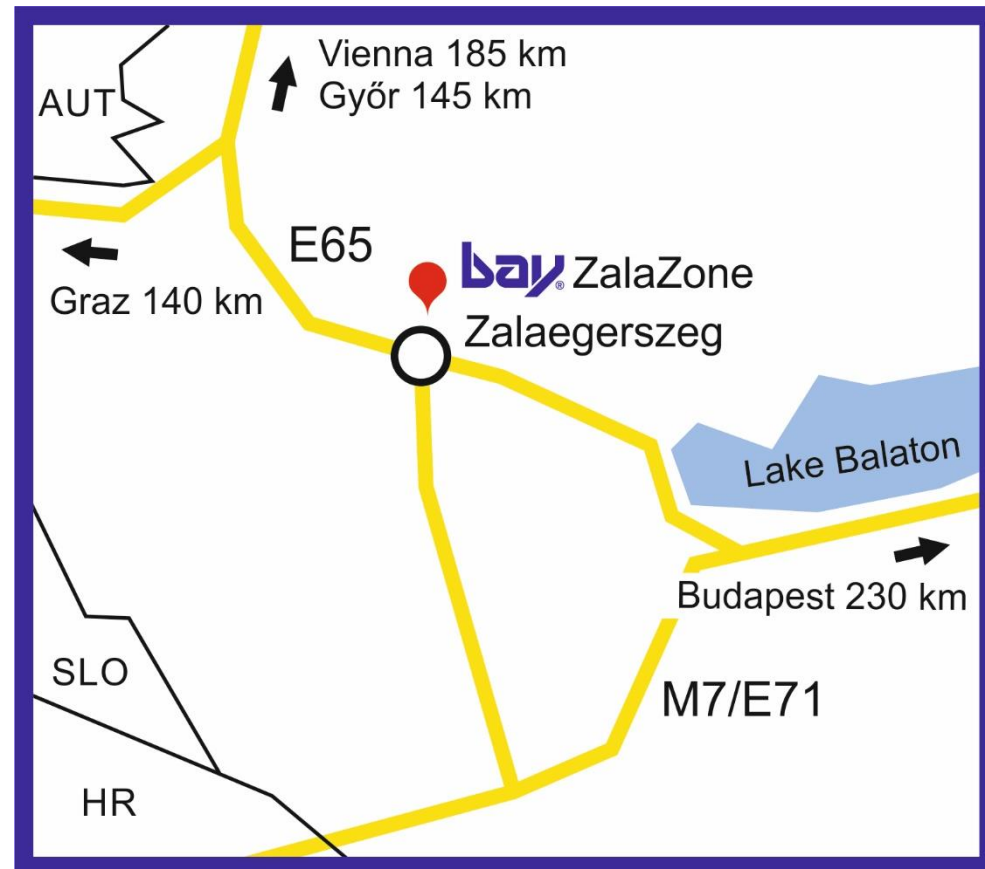
- ☐ Biotechnology Division (BAY-BIO)
- ☐ Production Division (BAY-PROD)
- ☐ Engineering Division (BAY-ENG)
- ☐ Knowledge Management Centre (BAY-TMK)
- ☐ Business development (BAY-SALES)



**BAY Operation Locations in Hungary**



- Located in ZalaZone Park
- Easy access, close to highways (M7/E71, E65)
- Close to Austrian, Slovenian and Croatian border
- Airport access: Sármellék, Graz, Budapest, Győr-Pér
- Graz 2hrs, Budapest 2hrs, Győr 2hrs
- Address: Zalaegerszeg Dr. Michelberger Pál utca 3. 8900 Hungary





## Ansible Motion Delta S3 DIL simulator

### Technical parameters:

- Interactive real-time dynamic simulation
- Range of motion:  $\pm 2\text{m}$  X&Y,  $\pm 120^\circ$  yaw
- $270^\circ$  forward field of view plus 3 rear view mirror emulators
- 5 projectors
- Active steering
- Active pedals
- Active seat belt tension
- Harshness and vibration simulation
- Available commercial vehicle body kit
- Moving platform carrying capacity up to 500 kg
- Fit for passenger cars, commercial vehicles etc.
- Practical 100 m<sup>2</sup> laboratory area

### Usage:

- Chassis dynamics
- Powertrain development and driveability
- ADAS and active safety function calibration
- HMI design evaluations
- V2X studies
- Expert driver assessments
- Human and environment interactions





### **VIOSO**

allows dynamic eyepoint based  
warping with multiple camera  
support

### **MSC VTD (under procurement)**

ADAS and Traffic simulation

### **AVL VSM**

Vehicle model building software

**AVL Model.Connect**  
Co-simulation platform

### **FASTLAP PRO**

Racing usage simulation software;  
high quality vehicle dynamics  
feedback

### **Software independence**

We could manage nearly all  
automotive simulation softwares

### **COSWORTH PI**

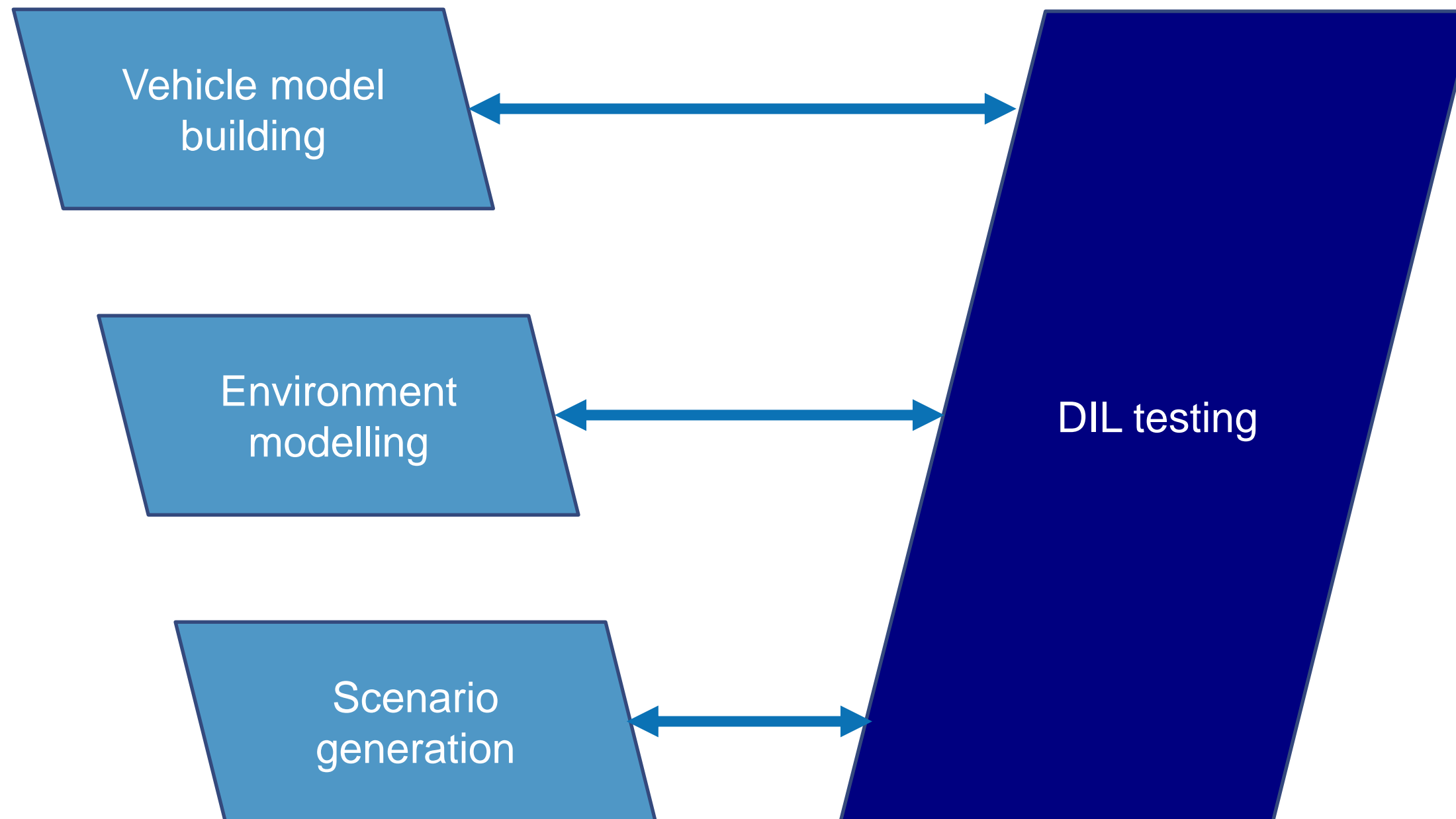
Telemetries & Data analysing

### **AML SWs**

Motion platform control and  
manage interfaces



## Complete simulation infrastructure



## Simulation:

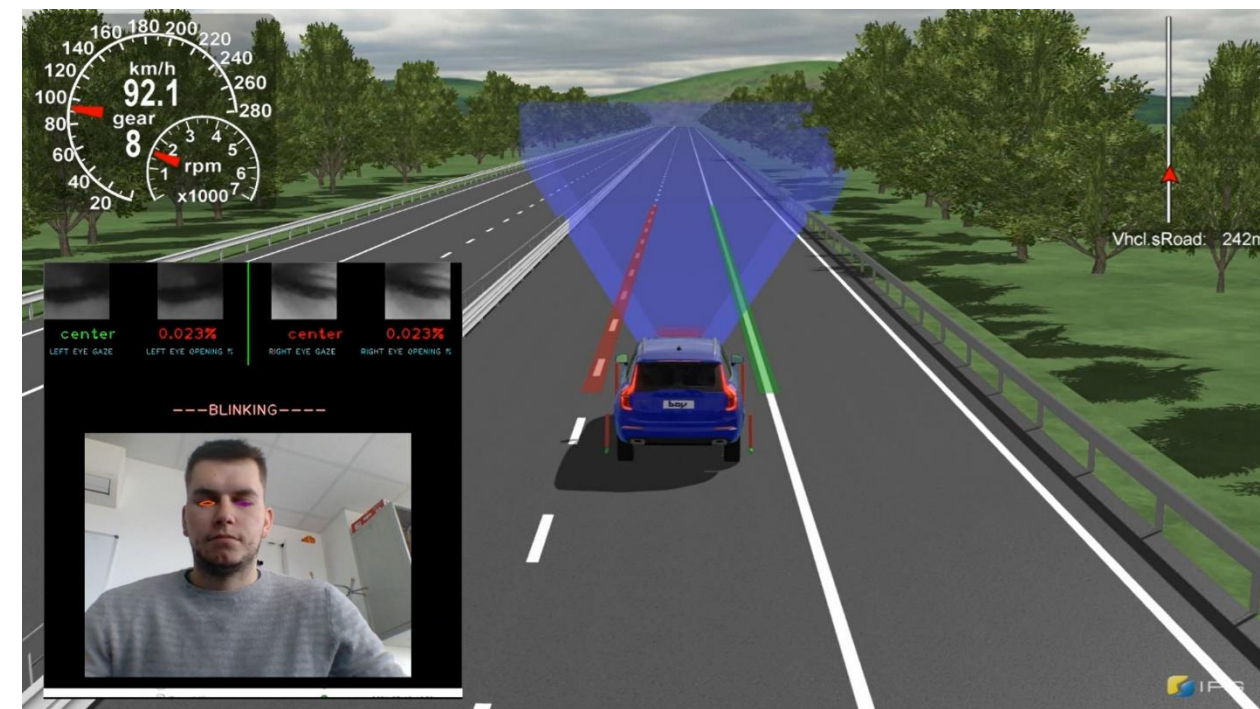
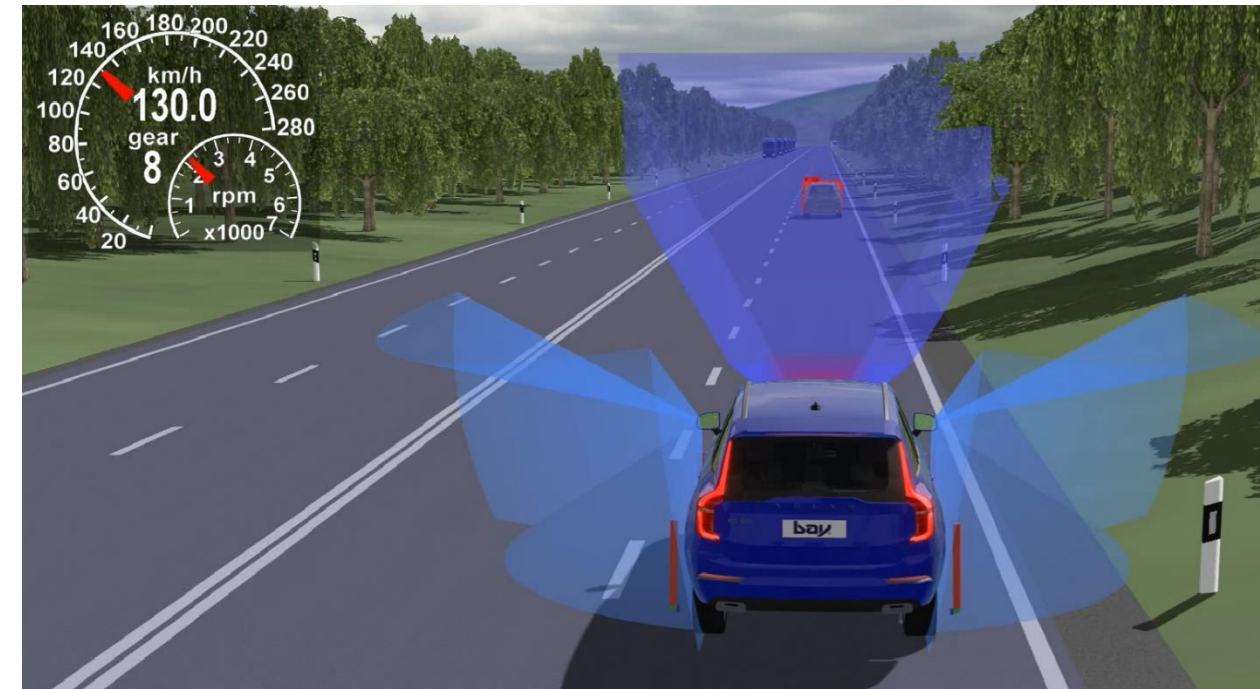
Massive traffic simulation  
ADAS functions developing and testing  
AD algorithms developing and testing  
Scenario development  
Environment generation, scanning

## Testing:

Vehicle testing preparation  
Driveline calibration  
HMI testing:  
    HUD testing  
    Dashboard ergonomic  
    DMS sensors and function

## Human factor:

Driver training  
Reaction time and stress monitoring  
Fatigue measuring lab for objective data  
Motion sickness





- Most advanced DIL simulator, operational from Q4 2022
- Booking from November (w47) 2022
- Part of ZalaZone infrastructure
- Easy access, close to highways
- State of the art service infrastructure
- Independent service provider
- Constant, dedicated, highly trained work force
- In house expertise in ADAS systems, driver monitoring
- Exclusivity offer to partners
- Competitive packages
- Secured data processing
- Commercial and tender services
- Fit for passenger cars, commercial vehicles, others eg aviation
- Subcontractor for customised cabin production



Mark LELKES PhD  
Site manager BAY ZalaZone DIL Laboratory

[mark.lelkes@bayzoltan.hu](mailto:mark.lelkes@bayzoltan.hu)